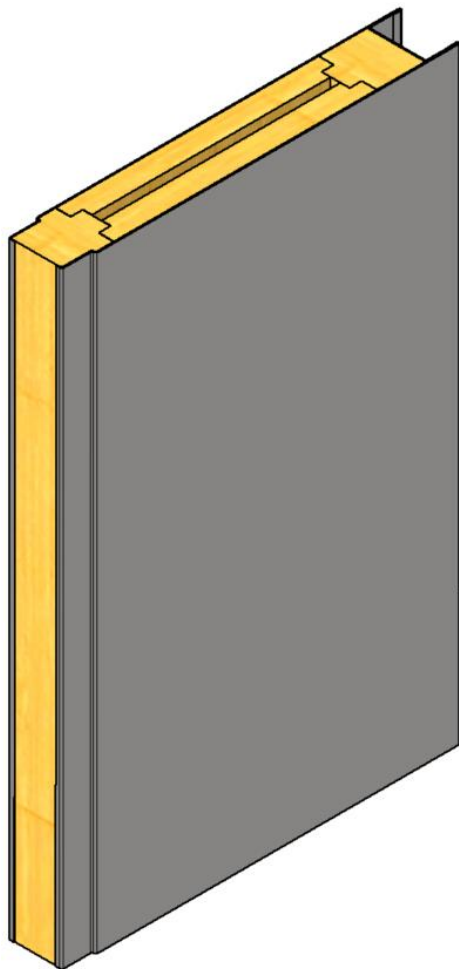


B15 RATED WALL SYSTEM

Standard tongue and groove joint acoustic

TYPE B-13-070



GENERAL INFORMATIONS:

Fire class: B15

Standard panel width (B): 300, 450, 600 mm

Panel width (possible options) :

- 150-600 mm* (B15 certified)
- up to 1000 mm* (non- certified)

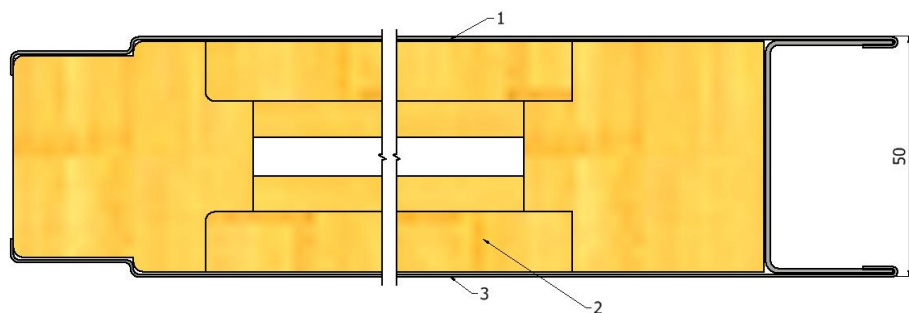
Standard panel height (H):

- up to 2600 mm* (B15 certified)
- up to 3000 mm* (non- certified)

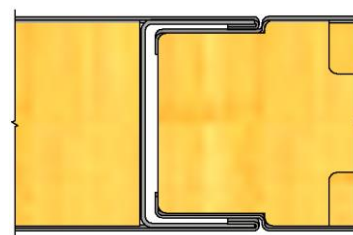
Mass: 50 mm – 17,7 kg/m²

Est. Sound red. (Rw): 50mm – 40 dB

CROSS-SECTION:



JOINING METHOD:



PRODUCT CODE EXAMPLE:

B-13-070 - B15 - 50 - 600x2000 - Galv - 9010 - Galv

TYPE

FIRE RATE

THICKNESS

SIZE BxH

MATERIAL

1. FINISH

2. FINISH

MATERIAL:

- Galvanized steel 0,6 mm
(Stainless steel 0,6 mm)
- Mineral wool density 175 kg/m³
- Galvanized steel 0,6 mm
(Stainless steel 0,6 mm)

FINISHING:

- RAL
- PVC Foil
- Galvanized steel
- Stainless steel