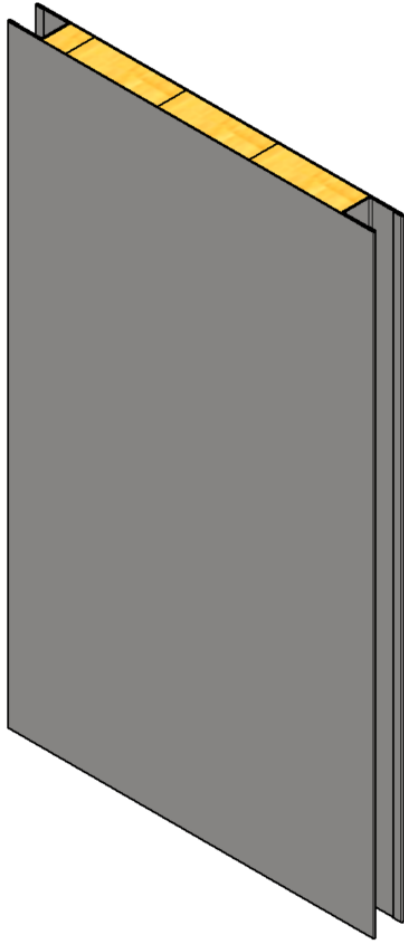


B15 RATED WALL SYSTEM

Double side groove

TYPE B-13-068



GENERAL INFORMATIONS:

Fire class: B15

Standard panel width (B): 300, 450, 600 mm

Panel width (possible options) :

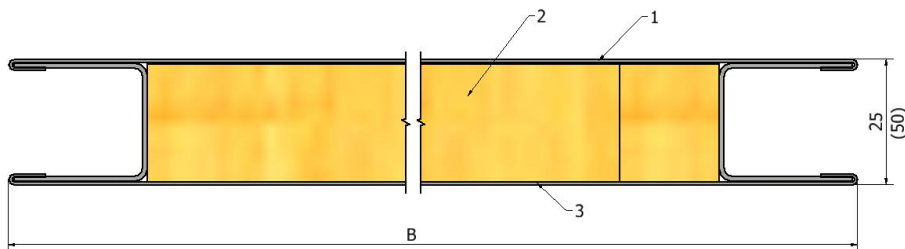
- 150-600 mm* (B15 certified)
- up to 1000 mm* (non- certified)

Standard panel height (H):

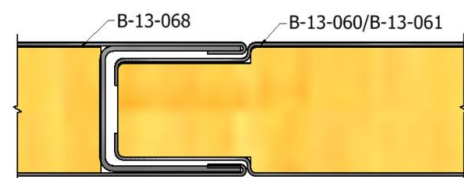
- up to 2600 mm* (B15 certified)
- up to 3000 mm* (non- certified)

Mass: 25mm – 16,5 kg/ m²
50 mm – 19,2 kg/m²

CROSS-SECTION:



JOINING METHOD:



PRODUCT CODE EXAMPLE:

B-13-068	- B15	- 25	- 600x2000	- Galv	- 9010	- Galv
TYPE	FIRE RATE	THICKNESS	SIZE BxH	MATERIAL	1. FINISH	2. FINISH

MATERIAL:

- Galvanized steel 0,6 mm
(Stainless steel 0,6 mm)
- Mineral wool density 175 kg/m³
- Galvanized steel 0,6 mm
(Stainless steel 0,6 mm)

FINISHING:

- RAL
- PVC Foil
- Galvanized steel
- Stainless steel

*For more information, contact us.