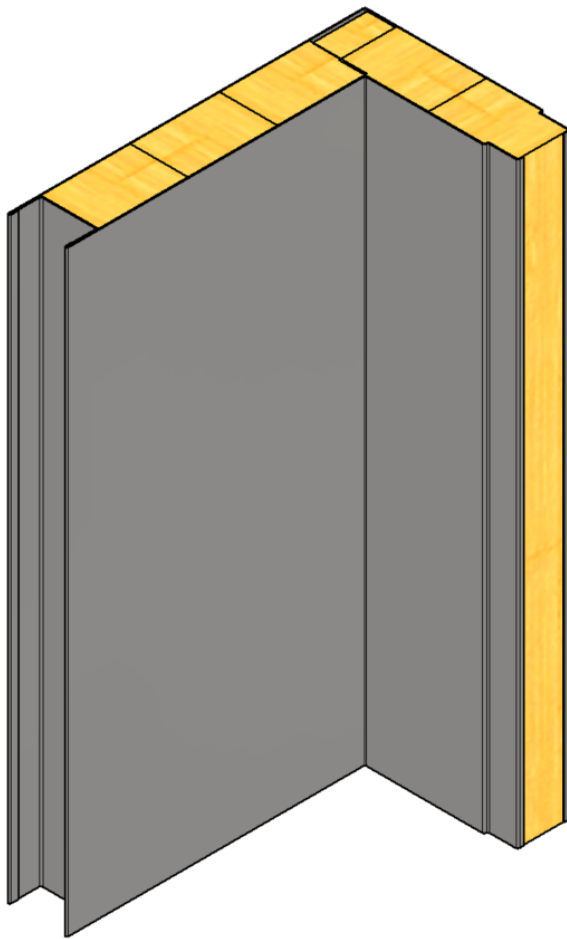


B15 RATED WALL SYSTEM

Tongue and groove joint right angle corner

TYPE
B-13-066



GENERAL INFORMATIONS:

Fire class: B15

Standard panel width (B): 300, 450, 600 mm

Panel width (possible options) :

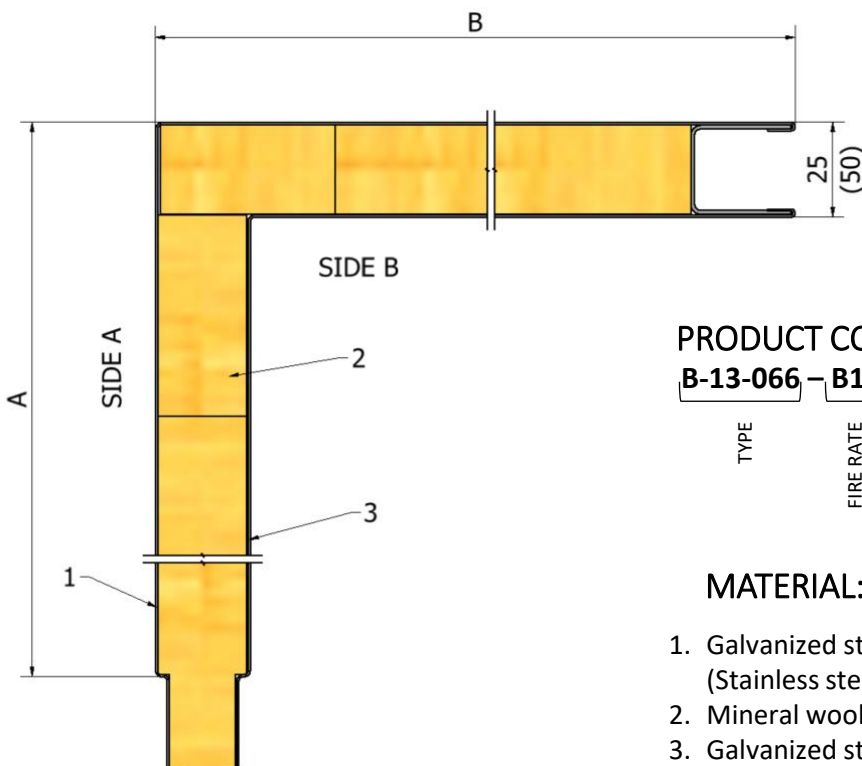
- 150-600 mm* (B15 certified)
- up to 1000 mm* (non-certified)

Standard panel height (H):

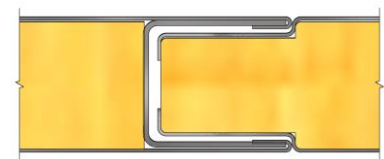
- up to 2600 mm* (B15 certified)
- up to 3000 mm* (non-certified)

Mass: 25mm – 15,4 kg/ m²
50 mm – 20,0 kg/m²

CROSS-SECTION:



JOINING METHOD:



PRODUCT CODE EXAMPLE:

B-13-066 – **B15** – **25** – **150x200x2000** – **Galv** – **9010** – **Galv**

TYPE	FIRE RATE	THICKNESS	SIZE AxBxH	MATERIAL	1. FINISH	2. FINISH
B-13-066	B15	25	150x200x2000	Galv	9010	Galv

MATERIAL:

1. Galvanized steel 0,6 mm (Stainless steel 0,6 mm)
2. Mineral wool density 175 kg/m³
3. Galvanized steel 0,6 mm (Stainless steel 0,6 mm)

FINISHING:

- RAL
- PVC Foil
- Galvanized steel
- Stainless steel