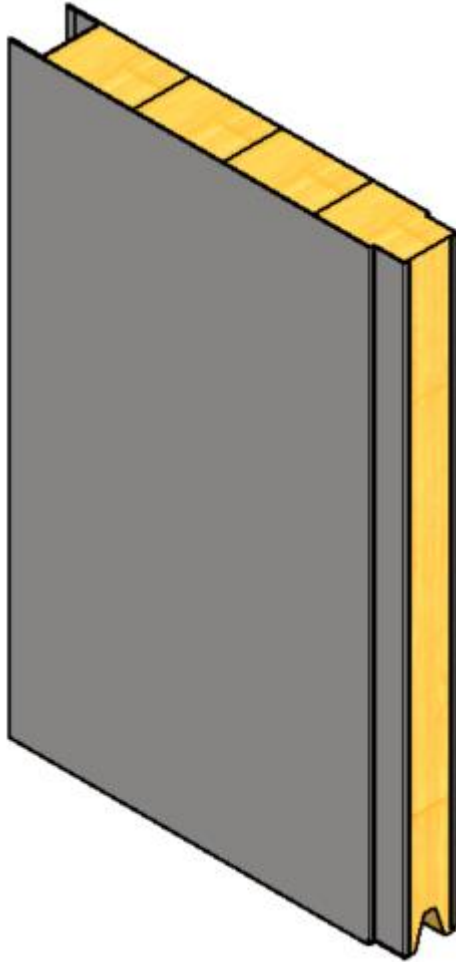


B15 RATED WALL SYSTEM for wet areas

Tongue and groove joint with bottom V symmetrical slot

TYPE B-13-064



GENERAL INFORMATIONS:

Fire class: B15

Standard panel width (B): 300, 450, 600 mm

Panel width (possible options) :

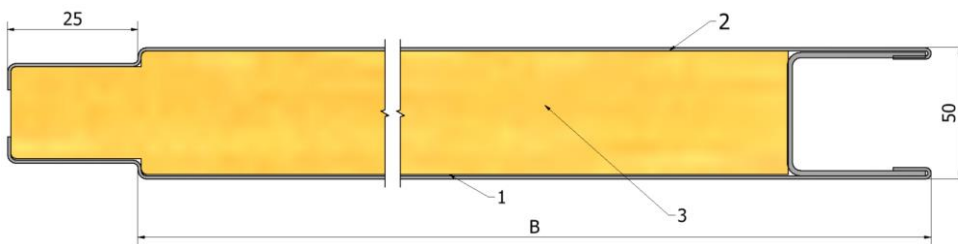
- 150-600 mm* (B15 certified)
- up to 1000 mm* (non- certified)

Standard panel height (H):

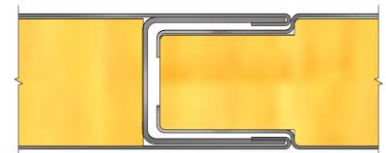
- up to 2600 mm* (B15 certified)
- up to 3000 mm* (non- certified)

Mass: 50 mm – 18,5 kg/m²

CROSS-SECTION:



JOINING METHOD:

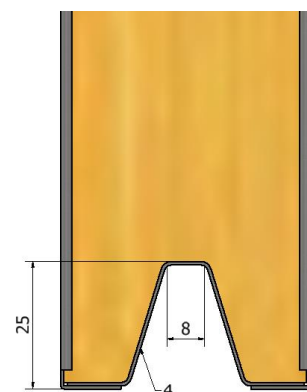


PRODUCT CODE EXAMPLE:

B-13-064 – **B15** – **50** – **600x2000** – **Galv** – **9010** – **Galv**

TYPE	FIRE RATE	THICKNESS	SIZE BxH	MATERIAL	1. FINISH	2. FINISH
B-13-064	B15	50	600x2000	Galv	9010	Galv

BOTTOM SIDE:



MATERIAL:

1. Galvanized steel 0,6 mm (Stainless steel 0,6 mm)
2. Mineral wool density 175 kg/m³
3. Galvanized steel 0,6 mm (Stainless steel 0,6 mm)
4. Profile - Galvanized steel 1,0 mm (Stainless steel 1,0 mm)

FINISHING:

- RAL
- PVC Foil
- Galvanized steel
- Stainless steel

*For more information, contact us.