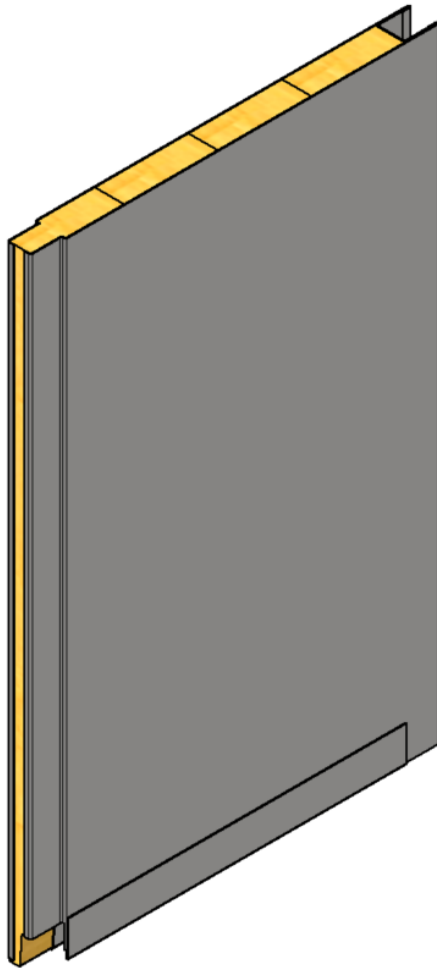


# B15 RATED WALL SYSTEM for wet areas

Tongue and groove joint with bottom straight slot

# TYPE B-13-063



## GENERAL INFORMATIONS:

Fire class: B15

Standard panel width (B): 300, 450, 600 mm

Panel width (possible options) :

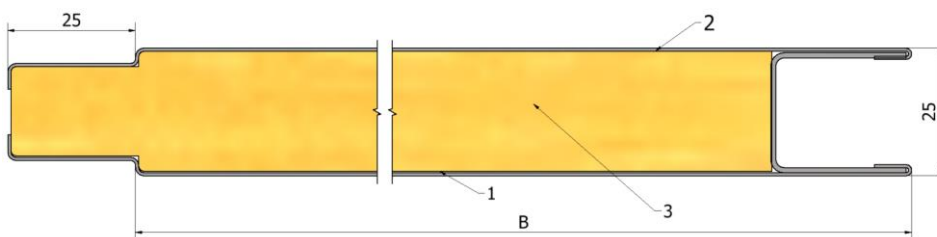
- 150-600 mm\* (B15 certified)
- up to 1000 mm\* (non- certified)

Standard panel height (H):

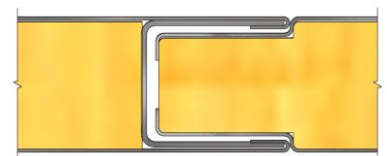
- up to 2600 mm\* (B15 certified)
- up to 3000 mm\* (non- certified)

Mass: 25 mm – 15,4 kg/m<sup>2</sup>

## CROSS-SECTION:



## JOINING METHOD:



## PRODUCT CODE EXAMPLE:

**B-13-063** – **B15** – **25** – **600x2000** – **Galv** – **9010** – **Galv**

TYPE

FIRE RATE

THICKNESS

SIZE BxH

MATERIAL

1. FINISH

2. FINISH

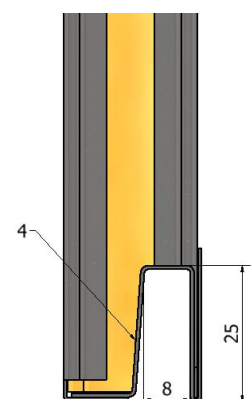
## MATERIAL:

1. Galvanized steel 0,6 mm (Stainless steel 0,6 mm)
2. Mineral wool density 175 kg/m<sup>3</sup>
3. Galvanized steel 0,6 mm (Stainless steel 0,6 mm)
4. Profile - Galvanized steel 1,0 mm (Stainless steel 1,0 mm)

## FINISHING:

- RAL
- PVC Foil
- Galvanized steel
- Stainless steel

## BOTTOM SIDE:



\*For more information, contact us.