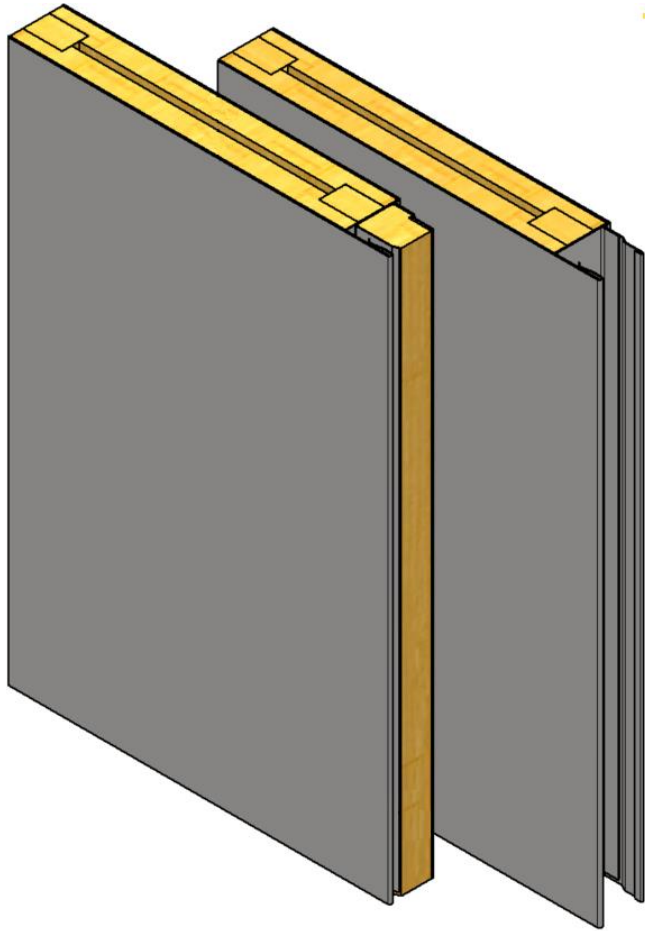


# B15 RATED WALL SYSTEM

Acoustic bulkhead- start/end panels

TYPE  
B-13-047



## GENERAL INFORMATIONS:

Fire class: B15

Standard panel width (B): 300, 450, 580 mm

Panel width (possible options) :

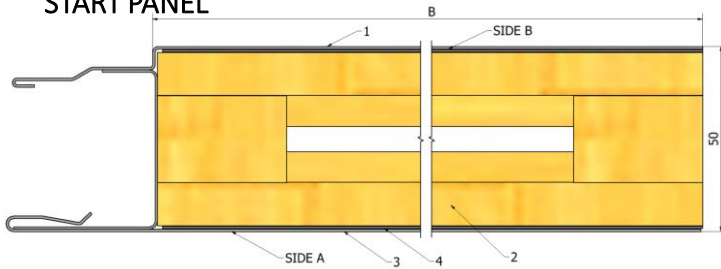
- 150-580 mm\* (B15 certified)
- up to 1000 mm\* (non- certified)

Standard panel height (H):

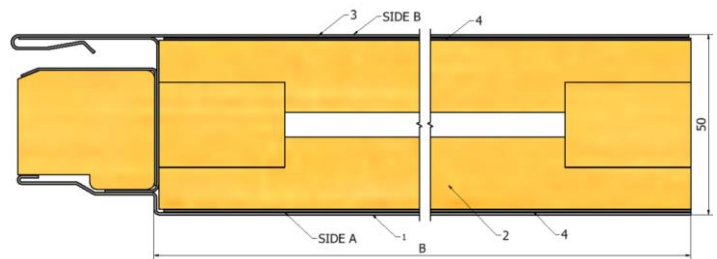
- up to 2600 mm\* (B15 certified)
- up to 3000 mm\* (non- certified)

Mass: 50 mm – 28,0 kg/m<sup>2</sup>

## CROSS-SECTION: START PANEL



## END PANEL

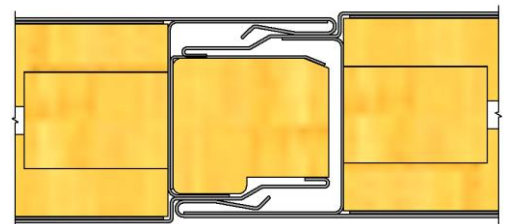


## PRODUCT CODE EXAMPLE:

**B-13-047** – **B15** – **50** – **580x2000** – **Galv** – **9010** – **Galv**

TYPE	FIRE RATE	THICKNESS	SIZE BxH	MATERIAL	1. FINISH	2. FINISH
------	-----------	-----------	----------	----------	-----------	-----------

## JOINING METHOD:



## MATERIAL:

1. Galvanized steel 0,6 mm  
(Stainless steel 0,6 mm)
2. Mineral wool density 175 kg/m<sup>3</sup>
3. Galvanized steel 0,6 mm  
(Stainless steel 0,6 mm)

## FINISHING:

- RAL
- PVC Foil
- Galvanized steel
- Stainless steel