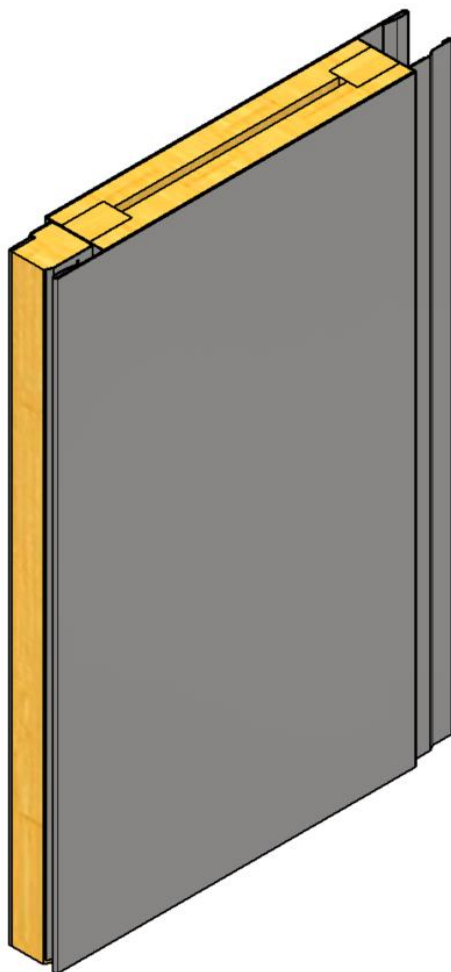


# B15 RATED WALL SYSTEM

Acoustic bulkhead

# TYPE B-13-046



## GENERAL INFORMATIONS:

Fire class: B15

Standard panel width (B): 300, 450, 580 mm

Panel width (possible options) :

- 150-580 mm\* (B15 certified)
- up to 1000 mm\* (non- certified)

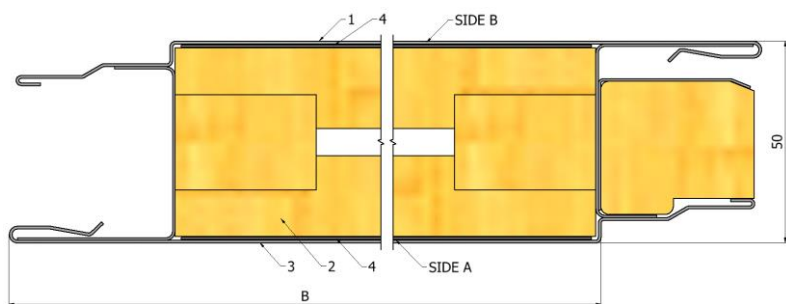
Standard panel height (H):

- up to 2600 mm\* (B15 certified)
- up to 3000 mm\* (non- certified)

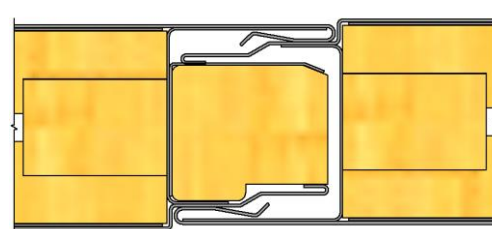
Mass: 50 mm – 28,9 kg/m<sup>2</sup>

Est. Sound red. (Rw): 50mm – 49 dB

## CROSS-SECTION:



## JOINING METHOD:



## PRODUCT CODE EXAMPLE:

**B-13-046 - B15 - 50 - 580x2000 - Galv - 9010 - 9001**

TYPE	FIRE RATE	THICKNESS	SIZE BxH	MATERIAL	1. FINISH	2. FINISH
------	-----------	-----------	----------	----------	-----------	-----------

## MATERIAL:

1. Galvanized steel 0,7 mm  
(Stainless steel 0,7 mm)
2. Mineral wool density 175 kg/m<sup>3</sup>
3. Galvanized steel 0,7 mm  
(Stainless steel 0,7 mm)
4. Galvanized steel 0,5 mm  
(Stainless steel 0,5 mm)

## FINISHING:

- RAL
- PVC Foil
- Galvanized steel
- Stainless steel

\*For more information, contact us.