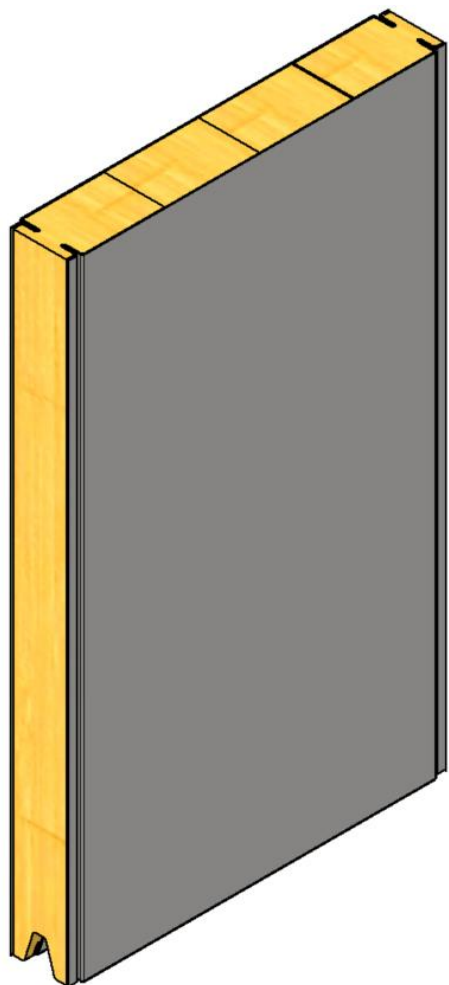


B15 RATED WALL SYSTEM

Tongue and groove joint with bottom V symmetrical slot

TYPE
B-13-053



GENERAL INFORMATION:

Fire class: B15

Standard panel width (B): 300, 450, 580 mm

Panel width (possible options) :

- 150-580 mm* (B15 certified)
- up to 1000 mm* (non- certified)

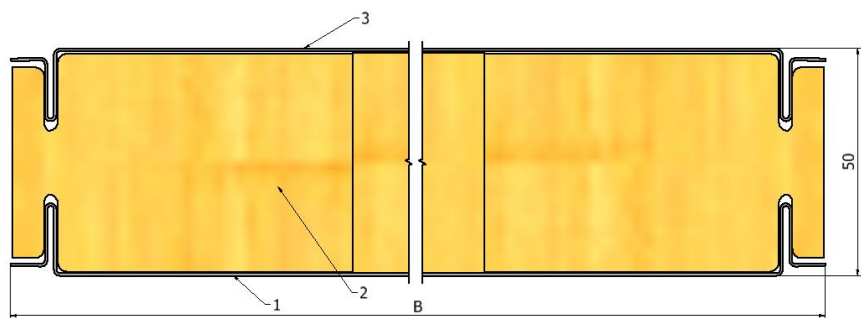
Standard panel height (H):

- up to 2600 mm* (B15 certified)
- up to 3000 mm* (non- certified)

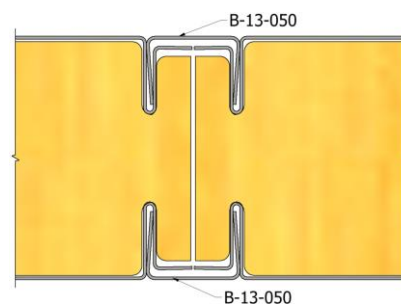
Mass: 50 mm – 18,9 kg/m²

Est. Sound red. (Rw):

CROSS-SECTION:



JOINING METHOD:



PRODUCT CODE:

B-13-053 – B15 – 50 – 580x2000 – Galv – 9010 – 9003

TYPE

FIRE RATE

THICKNESS

SIZE BxH

MATERIAL

1. FINISH

2. FINISH

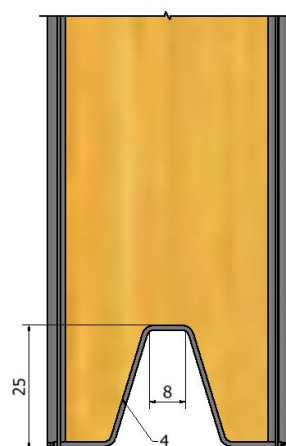
MATERIAL:

1. Galvanized steel 0,6 mm
(Stainless steel 0,6 mm)
2. Mineral wool density 175 kg/m³
3. Galvanized steel 0,6 mm
(Stainless steel 0,6 mm)
4. Profile - Galvanized steel 1,0 mm
(Stainless steel 1,0 mm)

FINISHING:

- RAL
- PVC Foil
- Galvanized steel
- Stainless steel

BOTTOM SIDE:



*For more information, contact us.