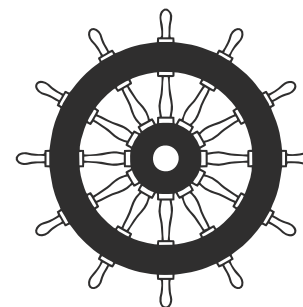
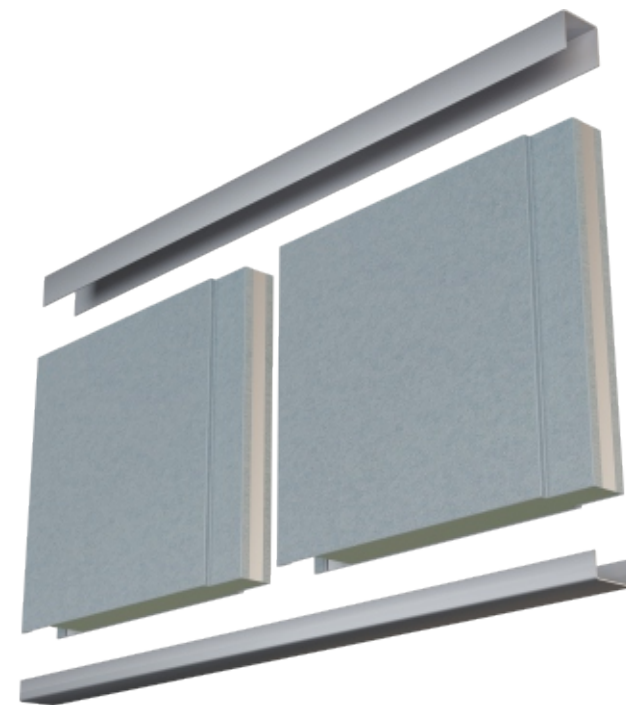


MARINE INTERIOR EQUIPMENT

WALLS



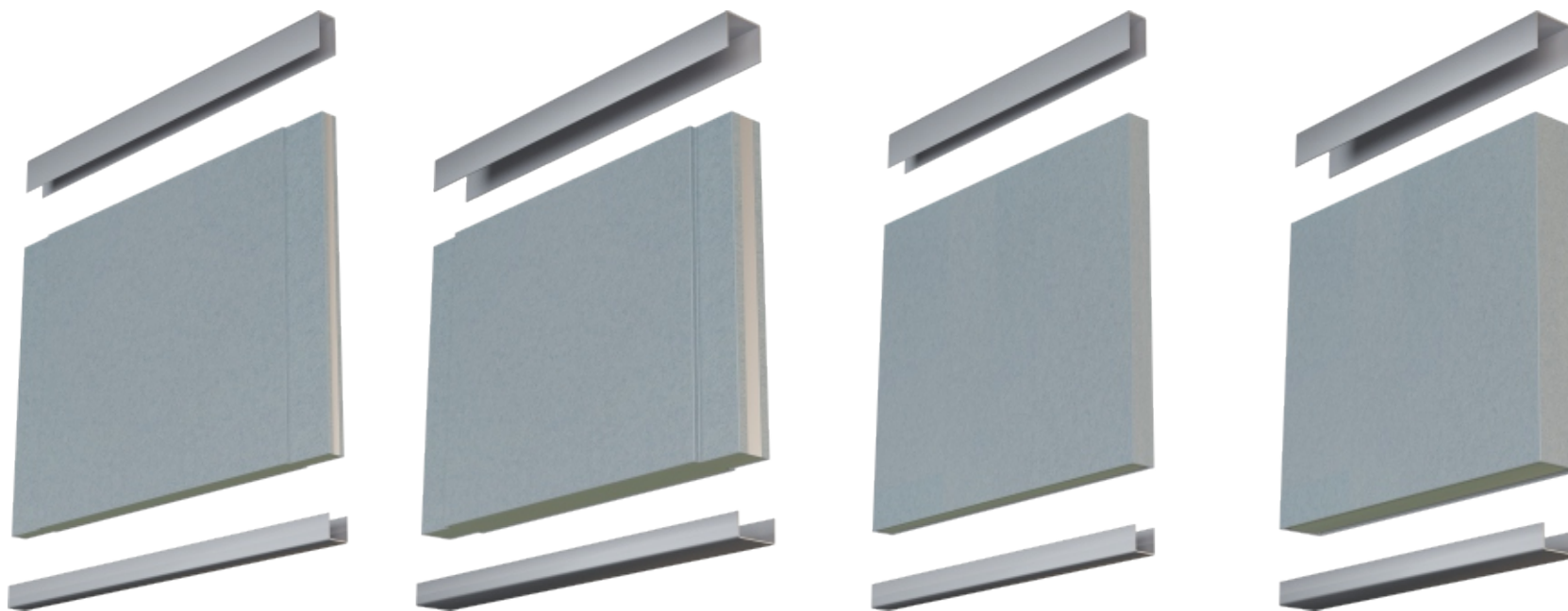
SEC 
SYSTEMS



INTEGRATED JOINT PANELS / SINGLE - SEAM JOINT

MODEL	B13-060	
DESCRIPTION		
Fire class	B15	B15
Standard width	600 mm	600 mm
Module length	up to 2600 mm	up to 2600 mm
Thickness	25 mm	50 mm
Weight	14.2 kg/m ²	18.2 kg/m ²
Sound reduction	31 dB	32dB
Insulation	150 kg/m ³	150 kg/m ³
Visible surface	PVC or powder coated*, stainless steel	PVC or powder coated*, stainless steel
Application	Wall lining	Wall partition

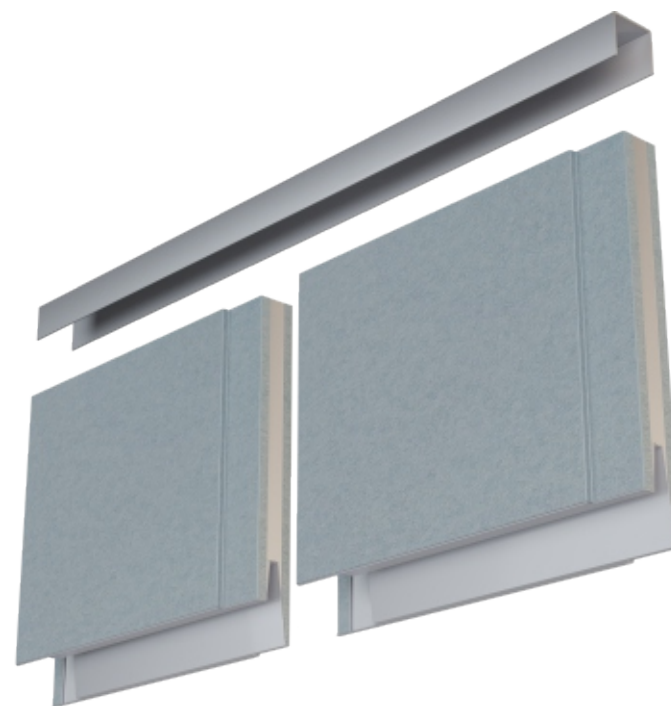
* According to RAL or NCS colors



INTEGRATED JOINT PANELS / SINGLE - SEAM JOINT

MODEL	B13-061		B13-062	
DESCRIPTION				
Fire class	B15	B15	B15	B15
Standard width	565 mm	565mm	600 mm	600 mm
Module length	up to 2600 mm	up to 2600 mm	up to 2600 mm	up to 2600 mm
Thickness	25 mm	50 mm	25 mm	50 mm
Weight	13,4 kg/m ²	17 kg/m ²	12,9 kg/m ²	16,6 kg/m ²
Sound reduction	n/a	n/a	n/a	n/a
Insulation	150 kg/m ³	150 kg/m ³	150 kg/m ³	150 kg/m ³
Visible surface	PVC or powder coated*, stainless steel	PVC or powder coated*, stainless steel	PVC or powder coated*, stainless steel	PVC or powder coated*, stainless steel
Application	Wall lining	Wall partition	Wall lining	Wall partition

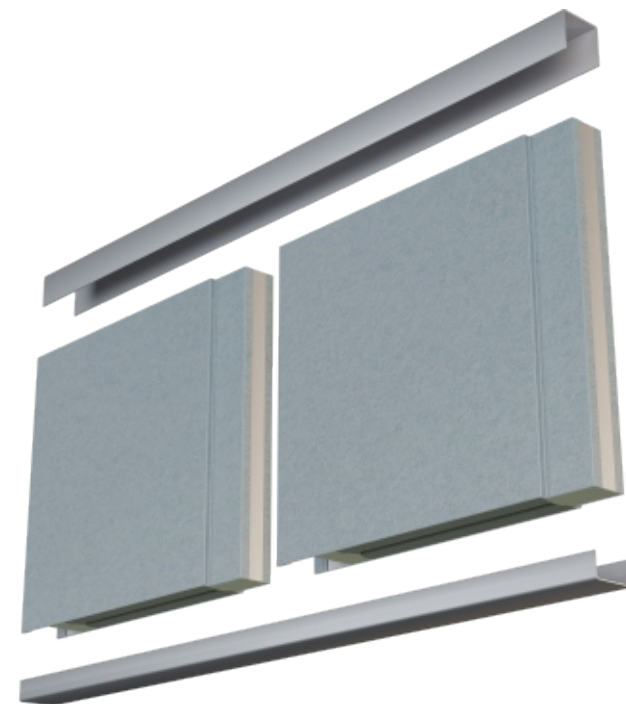
* According to RAL or NCS colors



INTEGRATED JOINT PANELS / SINGLE - SEAM JOINT / FOR WET AREAS

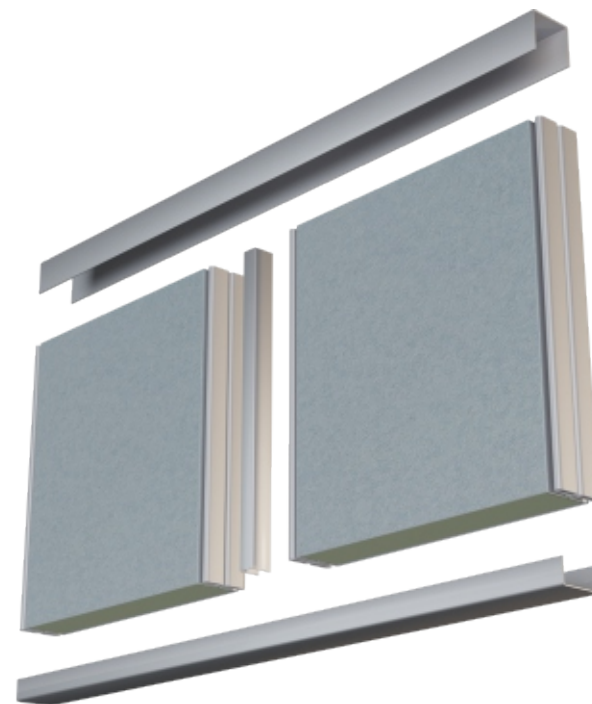
MODEL	B13-063	B13-064
DESCRIPTION		
Fire class	B15	B15
Standard width	600 mm	600 mm
Module length	up to 2600 mm	up to 2600 mm
Thickness	25 mm	50 mm
Weight	14,6 kg/m ²	18,4 kg/m ²
Sound reduction	n/a	n/a
Insulation	150 kg/m ³	150 kg/m ³
Visible surface	PVC or powder coated*, stainless steel	PVC or powder coated*, stainless steel
Application	Wall lining for wetrooms	Partition for wetrooms

* According to RAL or NCS colors



INTEGRATED JOINT PANELS / SINGLE - SEAM JOINT / FOR WET AREAS		INTEGRATED JOINT PANELS / SINGLE -SEAM JOINT / HIGH ACOUSTIC INSULATION
MODEL	B13-065	B13-070
DESCRIPTION	B13-065	B13-070
Fire class	B15	B15
Standard width	600 mm	600 mm
Module length	up to 2600 mm	up to 2600 mm
Thickness	50 mm	50 mm
Weight	18.7 kg/m ²	17.7 kg/m ²
Sound reduction	n/a	40 dB
Insulation	150 kg/m ³	180 kg/m ³
Visible surface	PVC or powder coated*, stainless steel	PVC or powder coated*, stainless steel
Application	Partition for wetrooms	Acoustic partition

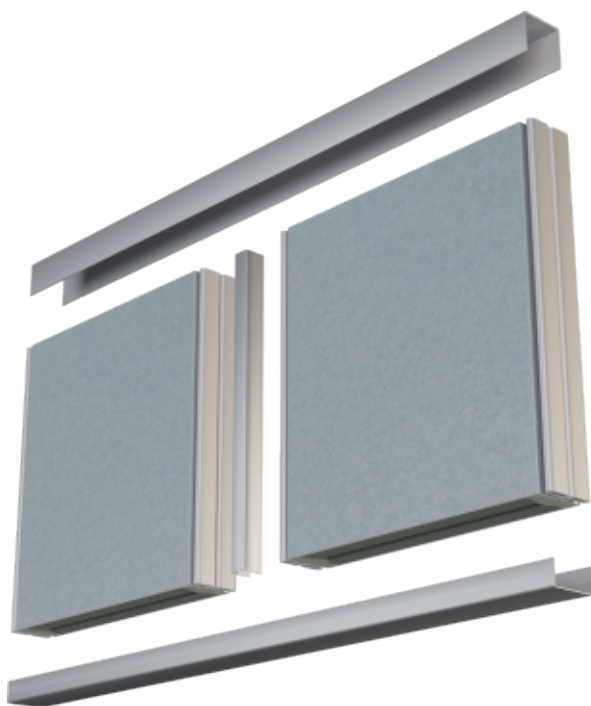
* According to RAL or NCS colors



C-JOINT PANELS / DOUBLE - SEAM JOINT

MODEL	B13-048	B13-049
DESCRIPTION		
Fire class	B15	B15
Standard width	580 mm	580mm
Module length	up to 2500 mm	up to 2500 mm
Thickness	25 mm	50 mm
Weight	14,8 kg/m ²	18,5 kg/m ²
Sound reduction	n/a	32dB
Insulation	175 kg/m ³	150 kg/m ³
Visible surface	PVC or powder coated*, stainless steel	PVC or powder coated*, stainless steel
Application	Wall lining	Wall partition

* According to RAL or NCS colors



C-JOINT PANELS / DOUBLE - SEAM JOINT / HIGH ACOUSTIC INSULATION		C-JOINT PANELS / DOUBLE - SEAM JOINT / FOR WET AREAS
MODEL	B13-051	B13-052
DESCRIPTION		
Fire class	B15	B15
Standard width	580 mm	580 mm
Module length	up to 2500 mm	up to 2500 mm
Thickness	50 mm	25 mm
Weight	18,5 kg/m ²	15,2 kg/m ²
Sound reduction	45 dB	n/a
Insulation	150 kg/m ³	175 kg/m ³
Visible surface	PVC or powder coated*, stainless steel	PVC or powder coated*, stainless steel
Application	Wall partition	Wall lining for wetrooms

* According to RAL or NCS colors



C-JOINT PANELS / DOUBLE - SEAM JOINT / FOR WET AREAS

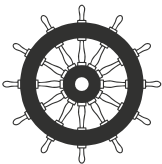
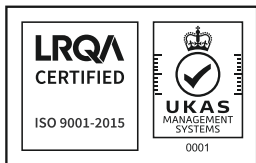
MODEL	B13-053	B13-054
DESCRIPTION		
Fire class	B15	B15
Standard width	580 mm	580 mm
Module length	up to 2500 mm	up to 2500 mm
Thickness	50 mm	50 mm
Weight	18,9 kg/m ²	18,8 kg/m ²
Sound reduction	n/a	n/a
Insulation	150 kg/m ³	150 kg/m ³
Visible surface	PVC or powder coated*, stainless steel	PVC or powder coated*, stainless steel
Application	Partition for wetrooms	Partition for wetrooms

* According to RAL or NCS colors



INTEGRATED JOINT PANELS / SINGLE - SEAM JOINT / HIGH ACOUSTIC INSULATION	
MODEL	B-13-046
DESCRIPTION	
Fire class	B15
Standard width	560mm
Module length	up to 2450 mm
Thickness	50 mm
Weight	28,9 kg/m ²
Sound reduction	49 dB
Insulation	175 kg/m ³
Visible surface	PVC or powder coated*, stainless steel
Application	Acoustic partition

* According to RAL or NCS colors



OFFICE:

ul. prof. W. Andruszkiewicza 5
80-601 Gdańsk

PRODUCTION

ul. Gdańska 37
83-200 Starogard Gdański

Poland

+48 587 316 720
info@sec-systems.pl



www.sec-systems.pl