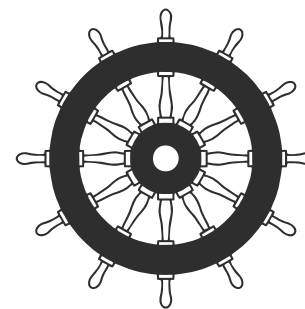


# MARINE INTERIOR EQUIPMENT

## CLASS DOORS



[www.sec-systems.pl](http://www.sec-systems.pl)

DOOR LIGHT CLASS B, C

DOOR HEAVY CLASS A

INSPECTION HATCHES

MODEL	
DESCRIPTION	17-003
Fire class	C
Surface door leaf	Painted*, stainless steel or PVC, HPL, wallpaper coated
Frame (and top element)	Painted*, stainless steel
Thickness doorleaf	42 mm
Weight	53,20 kg **
Core material	Paroc
Clear opening	Width: Standard up to 1034 Height: Standard up to 2133
Element height	n/a
Sound reduction	n/a
Standard specification	Remor Recz, TrioVing, Schwepper, Assa Abloy
Application	Internal door / single-leaf door
OPTIONS	
Vision panel (window / porthole)	■
Vantilation grille	■
Kick-out panel	■
Dropdown treshold	■
Door closer	■
Counterframe	■
Frame around leaf of door	■
Bolted frame	■
Honey comb	■
Other hardware: door catch, bumper, pawl door hook and simililar	■



\* According to RAL or NCS colors

\*\* Weight is based on a door with clear opening 700x2000 mm

\*\*\* Weight is based on a door with clear opening 1200x2150 mm

MODEL	
DESCRIPTION	17-004
Fire class	C
Surface door leaf	Painted*, stainless steel or PVC, HPL, wallpaper coated
Frame (and top element)	Painted*, stainless steel
Thickness doorleaf	42 mm
Weight	~ 100 kg ***
Core material	Paroc
Clear opening	Width: Standard up to 1034 Height: Standard up to 2133
Element height	n/a
Sound reduction	n/a
Standard specification	Remor Recz, TrioVing, Schwepper, Assa Abloy
Application	Internal door / double door
OPTIONS	
Vision panel (window / porthole)	■
Vantilation grille	■
Kick-out panel	■
Dropdown treshold	■
Door closer	■
Counterframe	■
Frame around leaf of door	■
Bolted frame	■
Honey comb	■
Other hardware: door catch, bumper, pawl door hook and similar	■



\* According to RAL or NCS colors

\*\* Weight is based on a door with clear opening 700x2000 mm

\*\*\* Weight is based on a door with clear opening 1200x2150 mm

MODEL	
DESCRIPTION	17-002
Fire class	B-0/B-15
Surface door leaf	Painted*, stainless steel or PVC, HPL, wallpaper coated
Frame (and top element)	Painted*, stainless steel
Thickness doorleaf	42 mm
Weight	53,20 kg **
Core material	Paroc
Clear opening	Width: Standard up to 1034 Height: Standard up to 2133
Element height	n/a
Sound reduction	Rw= 35 dB
Standard specification	Remor Recz, TrioVing, Schwepper, Assa Abloy
Application	Internal door / single-leaf door
OPTIONS	
Vision panel (window / porthole)	■
Vantilation grille	■
Kick-out panel	■
Dropdown treshold	■
Door closer	■
Counterframe	■
Frame around leaf of door	■
Bolted frame	■
Honey comb	
Other hardware: door catch, bumper, pawl door hook and similarr	■



\* According to RAL or NCS colors

\*\* Weight is based on a door with clear opening 700x2000 mm

\*\*\* Weight is based on a door with clear opening 1200x2150 mm

MODEL	
DESCRIPTION	19-001
Fire class	B-0/B-15
Surface door leaf	Painted*, stainless steel or PVC, HPL, wallpaper coated
Frame (and top element)	Painted*, stainless steel
Thickness doorleaf	42 mm
Weight	50,40 kg **
Core material	Paroc
Clear opening	Width: Standard up to 1034 Height: Standard up to 2133
Element height	Up to 2600 mm
Sound reduction	n/a
Standard specification	Remor Recz, TrioVing, Schwepper, Assa Abloy
Application	Internal door / single-leaf door
OPTIONS	
Vision panel (window / porthole)	■
Vantilation grille	■
Kick-out panel	■
Dropdown treshold	■
Door closer	■
Counterframe	■
Frame around leaf of door	■
Bolted frame	■
Honey comb	
Other hardware: door catch, bumper, pawl door hook and similar	■



\* According to RAL or NCS colors

\*\* Weight is based on a door with clear opening 700x2000 mm

\*\*\* Weight is based on a door with clear opening 1200x2150 mm

MODEL	
DESCRIPTION	19-002
Fire class	B-0/B-15
Surface door leaf	Painted*, stainless steel or PVC, HPL, wallpaper coated
Frame (and top element)	Painted*, stainless steel
Thickness doorleaf	42 mm
Weight	50,40 kg **
Core material	Paroc
Clear opening	Width: Standard up to 1034 Height: Standard up to 2133
Element height	Up to 2600 mm
Sound reduction	Rw= 39 dB
Standard specification	Remor Recz, TrioVing, Schwepper, Assa Abloy
Application	Internal door / single-leaf door
OPTIONS	
Vision panel (window / porthole)	
Vantilation grille	
Kick-out panel	
Dropdown treshold	■
Door closer	■
Counterframe	■
Frame around leaf of door	■
Bolted frame	■
Honey comb	
Other hardware: door catch, bumper, pawl door hook and simililar	■



\* According to RAL or NCS colors

\*\* Weight is based on a door with clear opening 700x2000 mm

\*\*\* Weight is based on a door with clear opening 1200x2150 mm

MODEL	
DESCRIPTION	19-003
Fire class	B-0/B-15
Surface door leaf	Painted*, stainless steel or PVC, HPL, wallpaper coated
Frame (and top element)	Painted*, stainless steel
Thickness doorleaf	42 mm
Weight	~ 100 kg ***
Core material	Paroc
Clear opening	Width: Standard up to 1034 Height: Standard up to 2133
Element height	Up to 2600 mm
Sound reduction	n/a
Standard specification	Remor Recz, TrioVing, Schwepper, Assa Abloy
Application	Internal door / double door
OPTIONS	
Vision panel (window / porthole)	■
Vantilation grille	■
Kick-out panel	■
Dropdown treshold	■
Door closer	■
Counterframe	■
Frame around leaf of door	■
Bolted frame	■
Honey comb	
Other hardware: door catch, bumper, pawl door hook and similarr	■



\* According to RAL or NCS colors

\*\* Weight is based on a door with clear opening 700x2000 mm

\*\*\* Weight is based on a door with clear opening 1200x2150 mm

MODEL	
DESCRIPTION	18-005
Fire class	A15
Surface door leaf	Painted*, stainless steel or PVC, HPL, wallpaper coated
Frame (and top element)	Painted*, stainless steel
Thickness doorleaf	42 mm
Weight	38,00 kg **
Core material	Paroc
Clear opening	Width: Standard up to 1037 Height: Standard up to 2187
Sound reduction	n/a
Standard specification	Remor Recz, TrioVing, Schwepper, Assa Abloy
Application	Internal door
OPTIONS	
Vision panel (window / porthole)	■
Vantilation grille	■
Kick-out panel	■
Dropdown treshold	■
Door closer	■
Hose port	■
Gas tight	■
Frame around leaf of door	■
Bolted frame	■
Other hardware: door catch, bumper, pawl door hook and similar	■

\* According to RAL or NCS colors

\*\* Weight is based on a door with clear opening 700x2000 mm





MODEL	
DESCRIPTION	18-003
Fire class	A-0 / A-30
Surface door leaf	Painted*, stainless steel or PVC, HPL, wallpaper coated
Frame (and top element)	Painted*, stainless steel
Thickness doorleaf	65 mm
Weight	82.00 kg **
Core material	Paroc
Clear opening	Width: Standard up to 1078 Height: Standard up to 2228
Sound reduction	n/a
Standard specification	Remor Recz, TrioVing, Schwepper, Assa Abloy
Application	Internal door
OPTIONS	
Vision panel (window / porthole)	■
Vantilation grille	■
Kick-out panel	■
Dropdown treshold	■
Door closer	■
Hose port	■
Gas tight	■
Frame around leaf of door	■
Bolted frame	■
Other hardware: door catch, bumper, pawl door hook and similar	■

\* According to RAL or NCS colors

\*\* Weight is based on a door with clear opening 700x2000 mm



MODEL	
DESCRIPTION	18-004
Fire class	A60
Surface door leaf	Painted*, stainless steel or PVC, HPL, wallpaper coated
Frame (and top element)	Painted*, stainless steel
Thickness doorleaf	65 mm
Weight	105,00 kg **
Core material	Paroc
Clear opening	Width: Standard up to 1034 Height: Standard up to 2133
Sound reduction	n/a
Standard specification	Remor Recz, TrioVing, Schwepper, Assa Abloy
Application	Internal door
OPTIONS	
Vision panel (window / porthole)	■
Vantilation grille	■
Kick-out panel	■
Dropdown treshold	■
Door closer	■
Hose port	■
Gas tight	■
Frame around leaf of door	■
Bolted frame	■
Other hardware: door catch, bumper, pawl door hook and similar	■

\* According to RAL or NCS colors

\*\* Weight is based on a door with clear opening 700x2000 mm

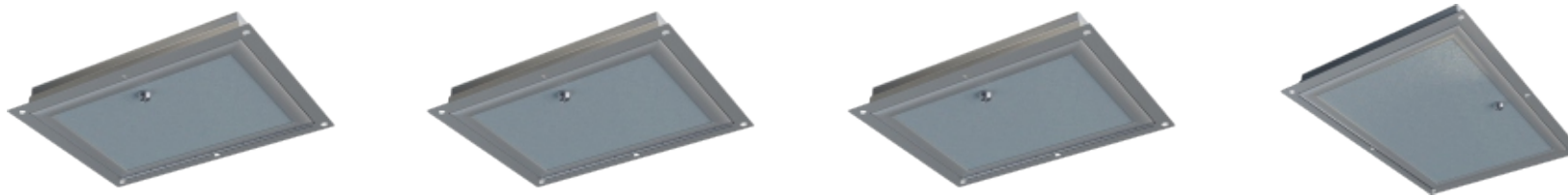




MODEL	16-001	16-002	16-003	16-004
DESCRIPTION				
Fire class	C	C	C	B15
Surface door leaf	Painted*, stainless steel or PVC, HPL, wallpaper coated	Painted*, stainless steel or PVC, HPL, wallpaper coated	Painted*, stainless steel or PVC, HPL, wallpaper coated	Painted*, stainless steel or PVC, HPL, wallpaper coated
Frame (and top element)	Painted*, stainless steel	Painted*, stainless steel	Painted*, stainless steel	Painted*, stainless steel
Thickness doorleaf	25 mm	25 or 50 mm	25 or 50 mm	25 / 50 mm
Weight	7,57 kg **	10,1kg for thickness 25mm 12,2 kg for thickness 50mm **	37,5 kg for thickness 25mm 43,9 kg for thickness 50mm **	31 kg/m <sup>2</sup>
Core material	Paroc	Paroc	Paroc	Paroc
Clear opening	Width: standard from 340 up to 410 mm Height: standard from 310 up to 410 mm	Width: standard from 403 up to 590 mm Height: standard from 650 up to 1820 mm	Width: standard from 850 up to 1230 mm Height: standard from 930 up to 1820 mm	Width: standard from 400 up to 700mm Height: standard from 600 up to 1850mm
Element height	n/a	n/a	n/a	n/a
Sound reduction	n/a	n/a	n/a	n/a
Standard specification	Remor Recz, Hafele	Remor Recz, Hafele	Remor Recz, Hafele	Remor Recz, Hafele
Application	Wall inspection hatches	Wall inspection hatches	Wall inspection hatches	Wall inspection hatches
<b>OPTIONS</b>				
Frame around leaf of door	■	■	■	■
Bolted frame	■	■	■	■
Honey comb	■	■	■	■
Other hardware: seal hook, padlock hook, triangle-key lock, recessed handle	■	■		

\* According to RAL or NCS colors

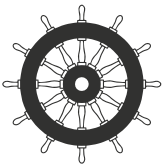
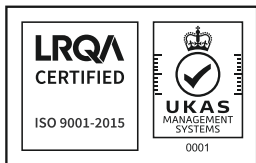
\*\* Weight is based on a door with clear opening 700x2000 mm



MODEL	16-314	16-315	16-318	16-319
DESCRIPTION				
Fire class	C	C	B0	B15
Surface door leaf	Painted*, stainless steel or PVC, HPL, wallpaper coated	Painted*, stainless steel or PVC, HPL, wallpaper coated	Painted*, stainless steel or PVC, HPL, wallpaper coated	Painted*, stainless steel or PVC, HPL, wallpaper coated
Frame (and top element)	Painted*, stainless steel	Painted*, stainless steel	Painted*, stainless steel	Painted*, stainless steel
Thickness doorleaf	23,5mm	23,5 mm	23,5 mm	23,5 mm
Weight	0,8 kg **	1 kg	1,1kg **	1,3 kg**
Core material	Paroc	Paroc	Paroc	Paroc
Clear opening	Width: Standard from 180 mm up to 300mm Height: Standard from 200mm up to 300mm	180x400 mm	Width: Standard from 200mm up to 600mm Height: Standard from 200mm up to 600mm	Width: Standard from 200mm up to 400mm Height: Standard from 200mm up to 400mm
Element height	n/a	n/a	n/a	n/a
Sound reduction	n/a	n/a	n/a	n/a
Standard specification	Remor Recz, Hafele	Remor Recz	Remor Recz, Hafele	Remor Recz, Hafele
Application	Ceiling inspection hatches	Ceiling inspection hatches for life line	Inspection hatches	Inspection hatches
<b>OPTIONS</b>				
Frame around leaf of door	■	■	■	■
Bolted frame	■	■	■	■
Honey comb	■	■	■	■
Other hardware: seal hook, padlock hook, triangle-key lock, recessed handle	■			

\* According to RAL or NCS colors

\*\* Weight is based on a door with clear opening 700x2000 mm



**OFFICE:**

ul. prof. W. Andruszkiewicza 5  
80-601 Gdańsk

**PRODUCTION**

ul. Gdańska 37  
83-200 Starogard Gdański

Poland

+48 587 316 720  
info@sec-systems.pl



[www.sec-systems.pl](http://www.sec-systems.pl)