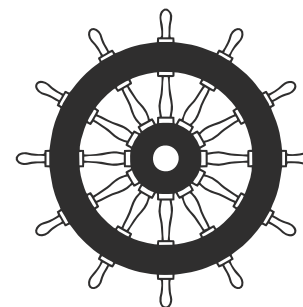


# MARINE INTERIOR EQUIPMENT CLASS DOORS



[www.sec-systems.pl](http://www.sec-systems.pl)

DOOR LIGHT CLASS B, C

DOOR HEAVY CLASS A

INSPECTION HATCHES

MODEL	
DESCRIPTION	17-003
Fire class	C
Surface door leaf	Painted*, stainless steel or PVC, HPL, wallpaper coated
Frame (and top element)	Painted*, stainless steel
Thickness doorleaf	42 mm
Weight	53,20 kg **
Core material	Paroc
Clear opening	Width: Standard up to 1034 Height: Standard up to 2133
Element height	n/a
Sound reduction	n/a
Standard specification	Remor Recz, TrioVing, Schwepper, Assa Abloy
Application	Internal door / single-leaf door
OPTIONS	
Vision panel (window / porthole)	■
Vantilation grille	■
Kick-out panel	■
Dropdown treshold	■
Door closer	■
Counterframe	■
Frame around leaf of door	■
Bolted frame	■
Honey comb	■
Other hardware: door catch, bumper, pawl door hook and similar	■



\* According to RAL or NCS colors

\*\* Weight is based on a door with clear opening 700x2000 mm

\*\*\* Weight is based on a door with clear opening 1200x2150 mm

MODEL 17-004	
DESCRIPTION	
Fire class	C
Surface door leaf	Painted*, stainless steel or PVC, HPL, wallpaper coated
Frame (and top element)	Painted*, stainless steel
Thickness doorleaf	42 mm
Weight	~ 100 kg ***
Core material	Paroc
Clear opening	Width: Standard up to 1034 Height: Standard up to 2133
Element height	n/a
Sound reduction	n/a
Standard specification	Remor Recz, TrioVing, Schwepper, Assa Abloy
Application	Internal door / double door
OPTIONS	
Vision panel (window / porthole)	■
Vantilation grille	■
Kick-out panel	■
Dropdown treshold	■
Door closer	■
Counterframe	■
Frame around leaf of door	■
Bolted frame	■
Honey comb	■
Other hardware: door catch, bumper, pawl door hook and similar	■



\* According to RAL or NCS colors

\*\* Weight is based on a door with clear opening 700x2000 mm

\*\*\* Weight is based on a door with clear opening 1200x2150 mm

MODEL 17-002	
DESCRIPTION	
Fire class	B-0/B-15
Surface door leaf	Painted*, stainless steel or PVC, HPL, wallpaper coated
Frame (and top element)	Painted*, stainless steel
Thickness doorleaf	42 mm
Weight	53,20 kg **
Core material	Paroc
Clear opening	Width: Standard up to 1034 Height: Standard up to 2133
Element height	n/a
Sound reduction	Rw= 35 dB
Standard specification	Remor Recz, TrioVing, Schwepper, Assa Abloy
Application	Internal door / single-leaf door
OPTIONS	
Vision panel (window / porthole)	■
Vantilation grille	■
Kick-out panel	■
Dropdown treshold	■
Door closer	■
Counterframe	■
Frame around leaf of door	■
Bolted frame	■
Honey comb	
Other hardware: door catch, bumper, pawl door hook and similar	■



\* According to RAL or NCS colors

\*\* Weight is based on a door with clear opening 700x2000 mm

\*\*\* Weight is based on a door with clear opening 1200x2150 mm

MODEL	
19-001	
DESCRIPTION	
Fire class	B-0/B-15
Surface door leaf	Painted*, stainless steel or PVC, HPL, wallpaper coated
Frame (and top element)	Painted*, stainless steel
Thickness doorleaf	42 mm
Weight	50,40 kg **
Core material	Paroc
Clear opening	Width: Standard up to 1034 Height: Standard up to 2133
Element height	Up to 2600 mm
Sound reduction	n/a
Standard specification	Remor Recz, TrioVing, Schwepper, Assa Abloy
Application	Internal door / single-leaf door
OPTIONS	
Vision panel (window / porthole)	■
Vantilation grille	■
Kick-out panel	■
Dropdown treshold	■
Door closer	■
Counterframe	■
Frame around leaf of door	■
Bolted frame	■
Honey comb	
Other hardware: door catch, bumper, pawl door hook and similar	■



\* According to RAL or NCS colors

\*\* Weight is based on a door with clear opening 700x2000 mm

\*\*\* Weight is based on a door with clear opening 1200x2150 mm

MODEL	
DESCRIPTION	19-002
Fire class	B-0/B-15
Surface door leaf	Painted*, stainless steel or PVC, HPL, wallpaper coated
Frame (and top element)	Painted*, stainless steel
Thickness doorleaf	42 mm
Weight	50,40 kg **
Core material	Paroc
Clear opening	Width: Standard up to 1034 Height: Standard up to 2133
Element height	Up to 2600 mm
Sound reduction	Rw= 39 dB
Standard specification	Remor Recz, TrioVing, Schwepper, Assa Abloy
Application	Internal door / single-leaf door
OPTIONS	
Vision panel (window / porthole)	
Vantilation grille	
Kick-out panel	
Dropdown treshold	■
Door closer	■
Counterframe	■
Frame around leaf of door	■
Bolted frame	■
Honey comb	
Other hardware: door catch, bumper, pawl door hook and similar	■



\* According to RAL or NCS colors

\*\* Weight is based on a door with clear opening 700x2000 mm

\*\*\* Weight is based on a door with clear opening 1200x2150 mm

MODEL	
DESCRIPTION	19-003
Fire class	B-0/B-15
Surface door leaf	Painted*, stainless steel or PVC, HPL, wallpaper coated
Frame (and top element)	Painted*, stainless steel
Thickness doorleaf	42 mm
Weight	~ 100 kg ***
Core material	Paroc
Clear opening	Width: Standard up to 1034 Height: Standard up to 2133
Element height	Up to 2600 mm
Sound reduction	n/a
Standard specification	Remor Recz, TrioVing, Schwepper, Assa Abloy
Application	Internal door / double door
OPTIONS	
Vision panel (window / porthole)	■
Vantilation grille	■
Kick-out panel	■
Dropdown treshold	■
Door closer	■
Counterframe	■
Frame around leaf of door	■
Bolted frame	■
Honey comb	
Other hardware: door catch, bumper, pawl door hook and similar	■



\* According to RAL or NCS colors

\*\* Weight is based on a door with clear opening 700x2000 mm

\*\*\* Weight is based on a door with clear opening 1200x2150 mm

MODEL	
DESCRIPTION	18-005
Fire class	A15
Surface door leaf	Painted*, stainless steel or PVC, HPL, wallpaper coated
Frame (and top element)	Painted*, stainless steel
Thickness doorleaf	42 mm
Weight	38,00 kg **
Core material	Paroc
Clear opening	Width: Standard up to 1037 Height: Standard up to 2187
Sound reduction	n/a
Standard specification	Remor Recz, TrioVing, Schwepper, Assa Abloy
Application	Internal door
OPTIONS	
Vision panel (window / porthole)	■
Vantilation grille	■
Kick-out panel	■
Dropdown treshold	■
Door closer	■
Hose port	■
Gas tight	■
Frame around leaf of door	■
Bolted frame	■
Other hardware: door catch, bumper, pawl door hook and similar	■

\* According to RAL or NCS colors

\*\* Weight is based on a door with clear opening 700x2000 mm



MODEL	
DESCRIPTION	18-003
Fire class	A-0 / A-30
Surface door leaf	Painted*, stainless steel or PVC, HPL, wallpaper coated
Frame (and top element)	Painted*, stainless steel
Thickness doorleaf	65 mm
Weight	82,00 kg **
Core material	Paroc
Clear opening	Width: Standard up to 1078 Height: Standard up to 2228
Sound reduction	n/a
Standard specification	Remor Recz, TrioVing, Schwepper, Assa Abloy
Application	Internal door
OPTIONS	
Vision panel (window / porthole)	■
Vantilation grille	■
Kick-out panel	■
Dropdown treshold	■
Door closer	■
Hose port	■
Gas tight	■
Frame around leaf of door	■
Bolted frame	■
Other hardware: door catch, bumper, pawl door hook and similar	■

\* According to RAL or NCS colors

\*\* Weight is based on a door with clear opening 700x2000 mm

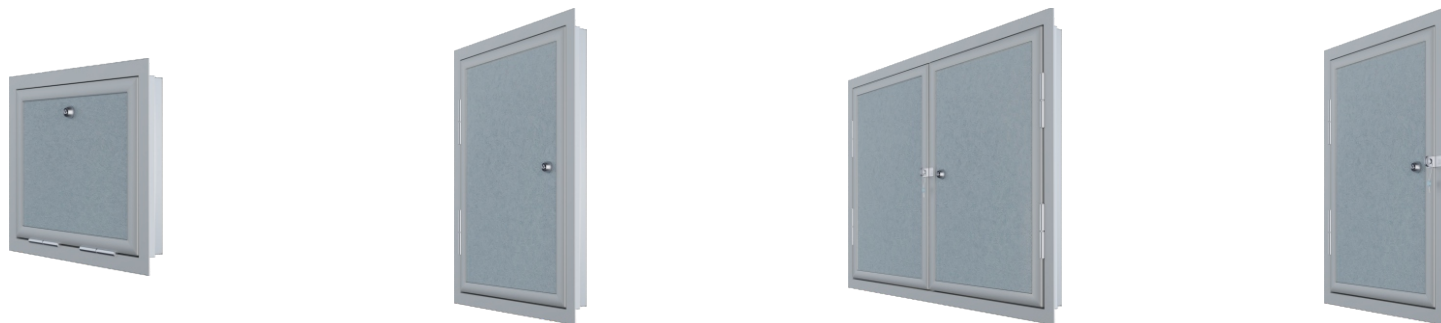


MODEL	
DESCRIPTION	18-004
Fire class	A60
Surface door leaf	Painted*, stainless steel or PVC, HPL, wallpaper coated
Frame (and top element)	Painted*, stainless steel
Thickness doorleaf	65 mm
Weight	105,00 kg **
Core material	Paroc
Clear opening	Width: Standard up to 1034 Height: Standard up to 2133
Sound reduction	n/a
Standard specification	Remor Recz, TrioVing, Schwepper, Assa Abloy
Application	Internal door
OPTIONS	
Vision panel (window / porthole)	■
Vantilation grille	■
Kick-out panel	■
Dropdown treshold	■
Door closer	■
Hose port	■
Gas tight	■
Frame around leaf of door	■
Bolted frame	■
Other hardware: door catch, bumper, pawl door hook and similar	■

\* According to RAL or NCS colors

\*\* Weight is based on a door with clear opening 700x2000 mm

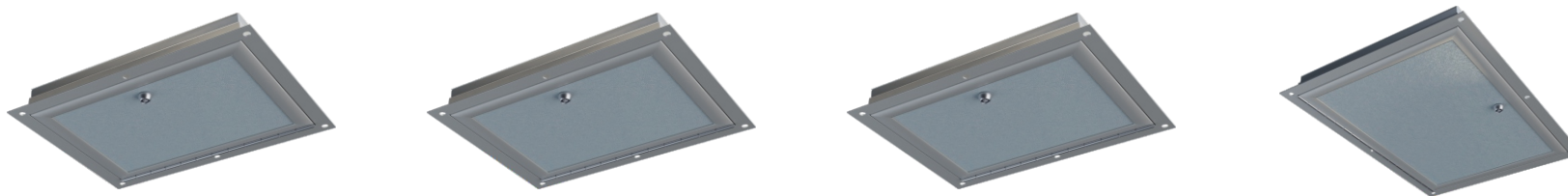




MODEL	16-001	16-002	16-003	16-004
DESCRIPTION				
Fire class	C	C	C	B15
Surface door leaf	Painted*, stainless steel or PVC, HPL, wallpaper coated	Painted*, stainless steel or PVC, HPL, wallpaper coated	Painted*, stainless steel or PVC, HPL, wallpaper coated	Painted*, stainless steel or PVC, HPL, wallpaper coated
Frame (and top element)	Painted*, stainless steel	Painted*, stainless steel	Painted*, stainless steel	Painted*, stainless steel
Thickness doorleaf	25 mm	25 or 50 mm	25 or 50 mm	25 / 50 mm
Weight	7,57 kg **	10,1kg for thickness 25mm 12,2 kg for thickness 50mm **	37,5 kg for thickness 25mm 43,9 kg for thickness 50mm **	31 kg/m²
Core material	Paroc	Paroc	Paroc	Paroc
Clear opening	Width: standard from 340 up to 410 mm Height: standard from 310 up to 410 mm	Width: standard from 403 up to 590 mm Height: standard from 650 up to 1820 mm	Width: standard from 850 up to 1230 mm Height: standard from 930 up to 1820 mm	Width: standard from 400 up to 700mm Height: standard from 600 up to 1850mm
Element height	n/a	n/a	n/a	n/a
Sound reduction	n/a	n/a	n/a	n/a
Standard specification	Remor Recz, Hafele	Remor Recz, Hafele	Remor Recz, Hafele	Remor Recz, Hafele
Application	Wall inspection hatches	Wall inspection hatches	Wall inspection hatches	Wall inspection hatches
OPTIONS				
Frame around leaf of door	■	■	■	■
Bolted frame	■	■	■	■
Honey comb	■	■	■	■
Other hardware: seal hook, padlock hook, triangle-key lock, recessed handle	■	■		

\* According to RAL or NCS colors

\*\* Weight is based on a door with clear opening 700x2000 mm



MODEL	16-314	16-315	16-318	16-319
DESCRIPTION				
Fire class	C	C	B0	B15
Surface door leaf	Painted*, stainless steel or PVC, HPL, wallpaper coated	Painted*, stainless steel or PVC, HPL, wallpaper coated	Painted*, stainless steel or PVC, HPL, wallpaper coated	Painted*, stainless steel or PVC, HPL, wallpaper coated
Frame (and top element)	Painted*, stainless steel	Painted*, stainless steel	Painted*, stainless steel	Painted*, stainless steel
Thickness doorleaf	23,5mm	23,5 mm	23,5 mm	23,5 mm
Weight	0,8 kg **	1 kg	1,1kg **	1,3 kg**
Core material	Paroc	Paroc	Paroc	Paroc
Clear opening	Width: Standard from 180 mm up to 300mm Height: Standard from 200mm up to 300mm	180x400 mm	Width: Standard from 200mm up to 600mm Height: Standard from 200mm up to 600mm	Width: Standard from 200mm up to 400mm Height: Standard from 200mm up to 400mm
Element height	n/a	n/a	n/a	n/a
Sound reduction	n/a	n/a	n/a	n/a
Standard specification	Remor Recz, Hafele	Remor Recz	Remor Recz, Hafele	Remor Recz, Hafele
Application	Ceiling inspection hatches	Ceiling inspection hatches for life line	Inspection hatches	Inspection hatches
OPTIONS				
Frame around leaf of door	■	■	■	■
Bolted frame	■	■	■	■
Honey comb	■	■	■	■
Other hardware: seal hook, padlock hook, triangle-key lock, recessed handle	■			

\* According to RAL or NCS colors

\*\* Weight is based on a door with clear opening 700x2000 mm

#### COMMERCIAL

Andrzej Urban  
Sales Manager  
a.urban@sec-systems.pl  
+48 797 026 441

Dominik Warembier  
Channel Sales Manager  
d.warembier@sec-systems.pl  
+48 510 895 976

#### PURCHASING

Konrad Zielke  
Purchasing Manager  
k.zielke@sec-systems.pl  
+48 668 486 690

#### PRODUCTION

Łukasz Janikowski  
Site Manager  
l.janikowski@sec-systems.pl  
+48 602 419 675

Izabela Rajewska  
Production Manager  
i.rajewska@sec-systems.pl  
+48 882 744 524

#### OFFICE:

ul. prof. W. Andruszkiewicza 5  
80-601 Gdańsk

#### PRODUCTION

ul. Gdańska 37  
83-200 Starogard Gdański

Poland

+48 587 316 720  
info@sec-systems.pl

